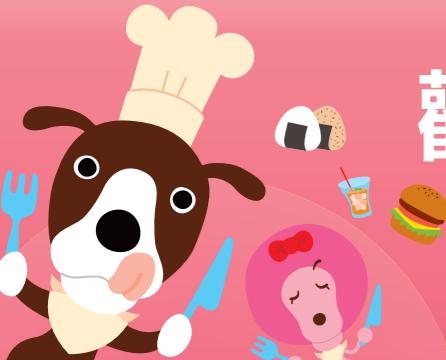


Wander ticket Wancha

探飽派客
Tabepark! JAPAN
Walk なんばウォーク

Guide Map ガイドマップ 指南圖



歡迎過來難波 Walk

購物施設・飲食店・全部有 **220** 店舖
220 shops, restaurants & cafe's are gathered

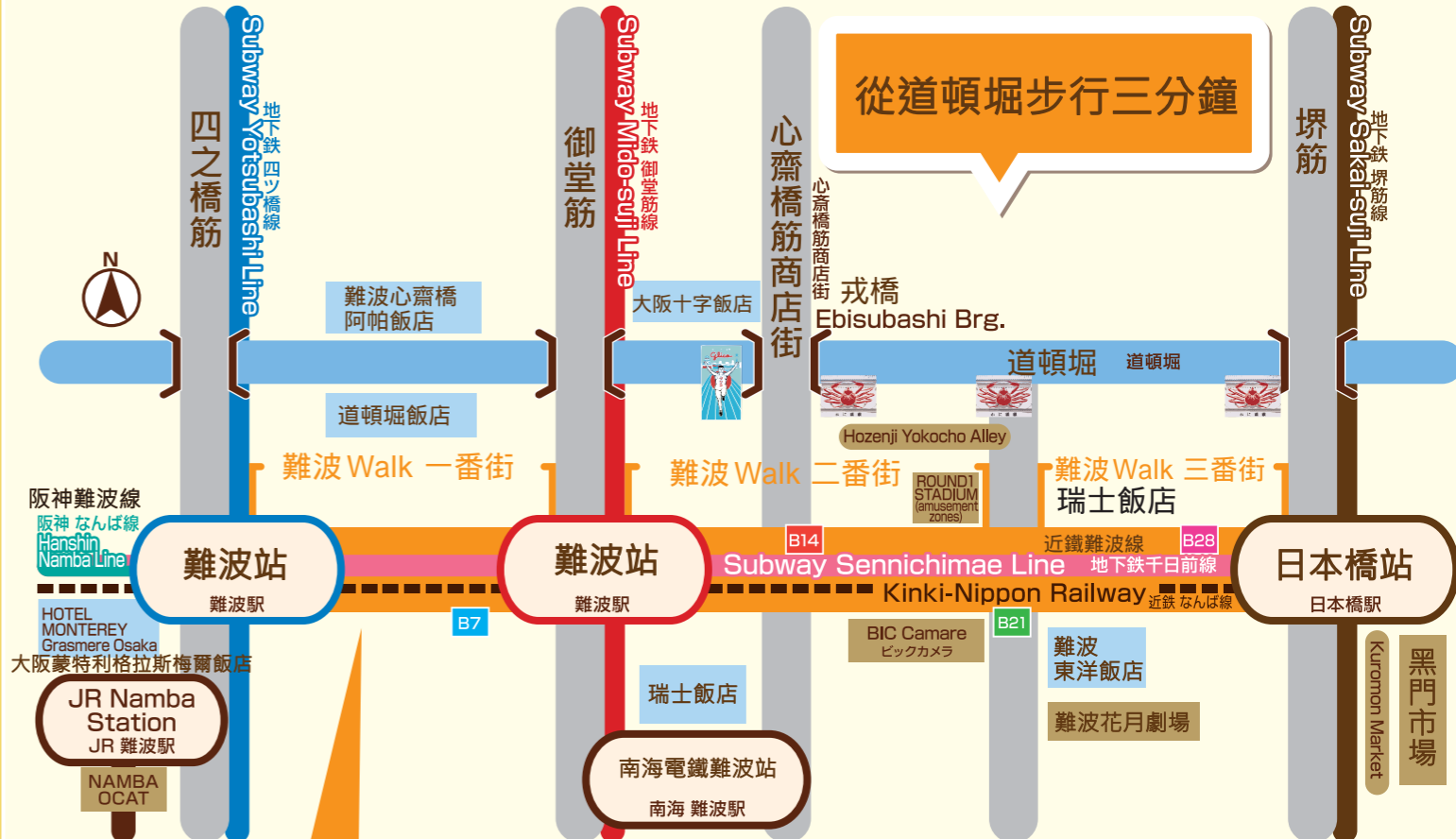


Business hours 營業時間
A variety of Fashion, Goods, Foods, Sweets Restaurant
10:00~21:00
10:00~22:00
※Business hours are different among stores

Holiday 定休日
2016/3/16 . 5/18 . 7/20

地上的地圖

地上マップ

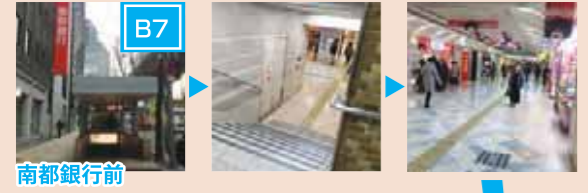


●在難波立・日本橋站 (JR/地鐵・近鐵) 下車之後立刻達!
●千日前通商業街的地下就是難波地下街

千日前通りを地下に降りるとなんばウォークです。

難波 Walk 地圖 NAMBA WALK FLOOR MAP なんばWalk フロアマップ

▼From Nanto Bank front



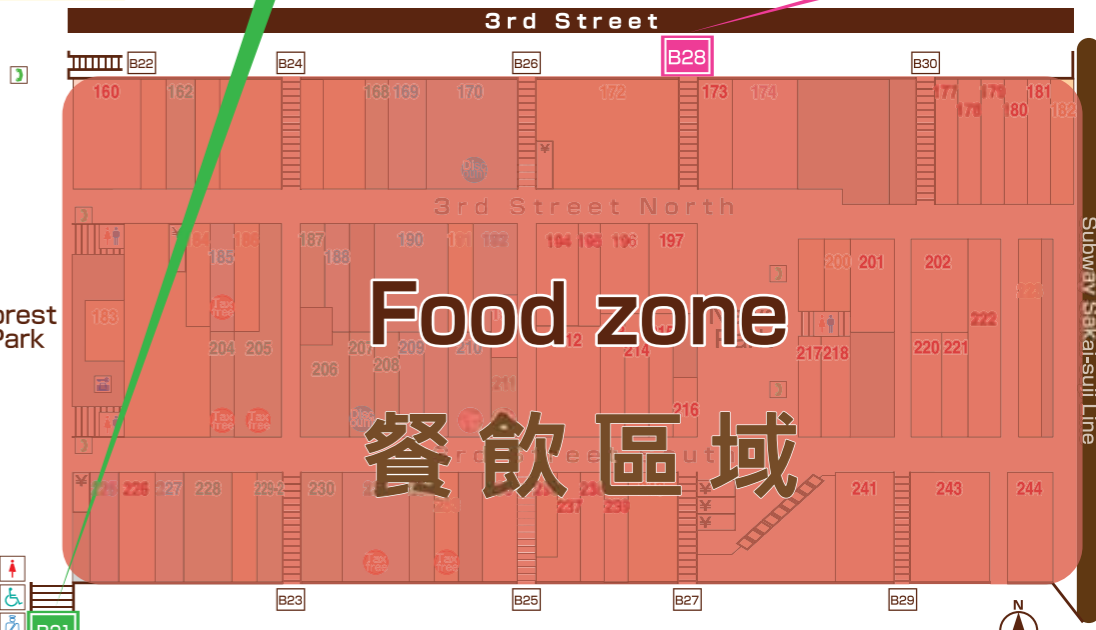
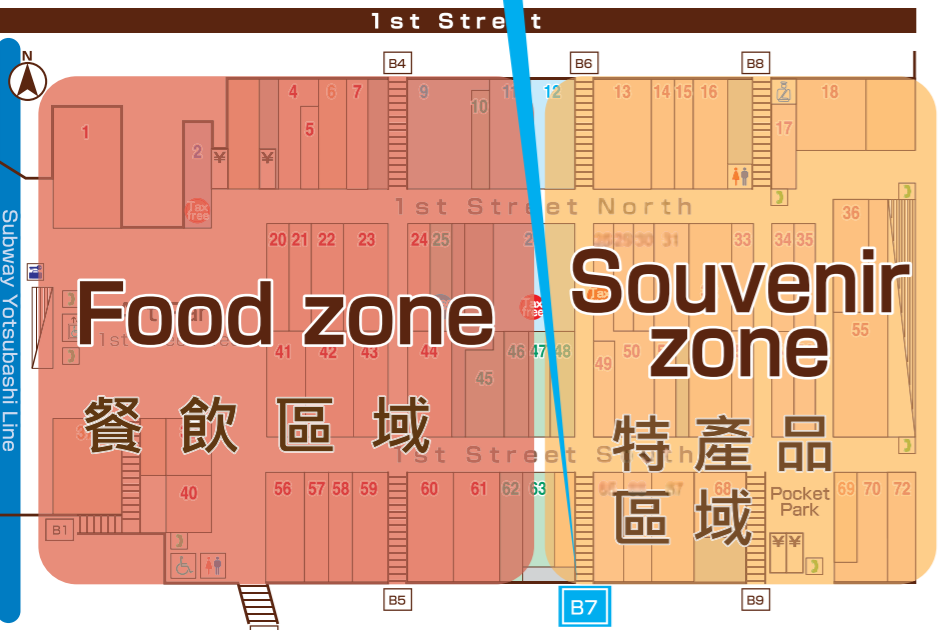
▼From Shinsaibashi-suji shopping St.



▼From BIC Camera 必客家美樂前



▼From Nipponbashi St.



南海電車難波站

必客家美樂

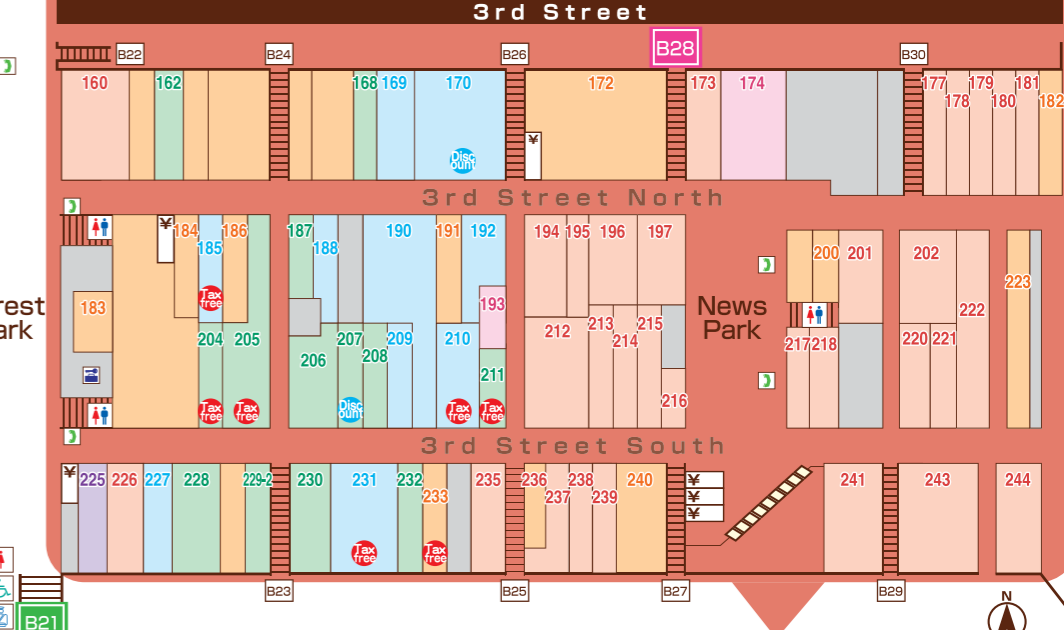
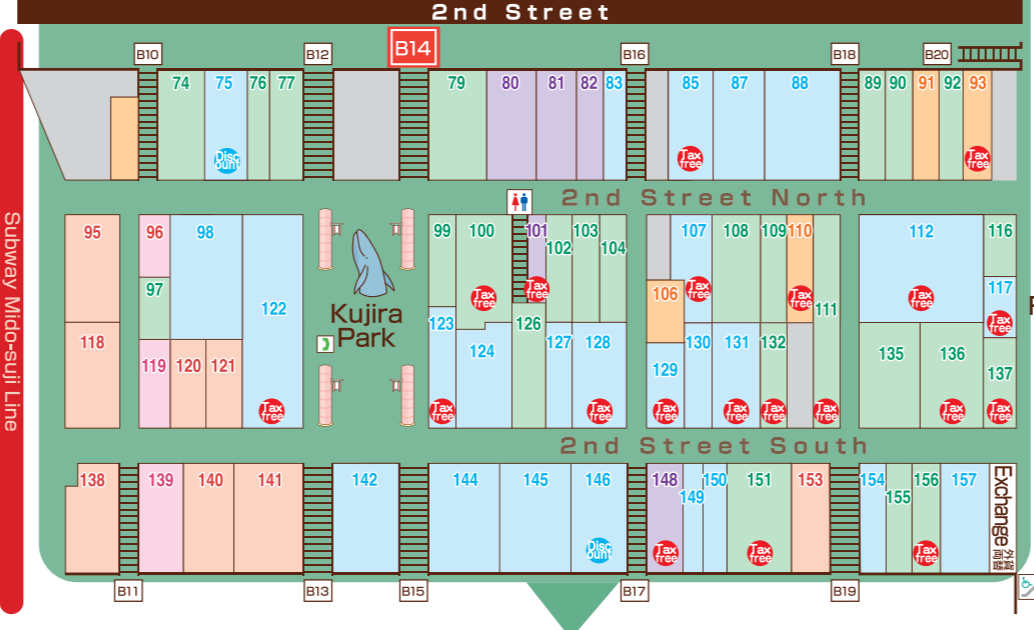
Kuromon Market

餐飲區域

特產品區域

購物區域

餐飲區域



餐飲・咖啡店

餐

- | | | |
|---------------------------------|----------------------------|------------------------------------------|
| 5 Curry 黒門屋 ▲ | 40 Okonomiyaki ミルキーウェイ ▲ | 59 Soba-Udon 家族亭 |
| 14 Egg cuisine 卵と私 ▲ | 42 Western food 洋食屋とんはる | 60 Pasta&Gohan Pasta&Gohan KITCHEN ダジュール |
| 15 Kyoto-style spaghetti 先斗入ル ▲ | 43 Chanpon 中央軒 ▲ | 61 Japanese food 膳や ▲ |
| 20 Takoyaki-Taiyaki 築地銀だこ ▲ | 44 Pork cutlets 豚晴 | 67 Udon うどん王 ▲ |
| 21 Udon 四國 ▲ | 56 Soba-Udon さらしな廣田屋 ▲ | 68 Curry ビッコロ ▲ |
| 23 Chinese food 551蓬萊 | 57 Meat&Beer-Wine EAT MEAT | 70 Tempura-Unagi 江戸川 |
| 24 Tendon 天亭 ▲ | 58 Shabu-shabu new KOBE | |

居酒屋

- | |
|------------------------------------------|
| 4 Izakaya 鮮酒鮮味工房 若狭 |
| 7 Spanish BAR 魚貝バル 式番 |
| 22 Izakaya 大ざわ ▲ |
| 41 Izakaya ヨネヤ ▲ |
| 55 Beer stand BEER'S TABLE KELLER KELLER |

咖啡・面包店

- | | |
|---------------------------------------------|------------------------------|
| 1 Cafe-Light meal ITALIAN TOMATO Café Jr. ▲ | 32 Bakery-Cafe COOK house ▲ |
| 13 Cafe caffè clever ▲ | 36 Ice cream サーティワンアイスクリーム ▲ |
| 16 Bakery Die Güte ▲ | 39 Cafe-Light meal 英國屋WEST ▲ |
| 18 Cafe KIEFEL COFFEE 1963 | 72 Coffee shop エリカ ▲ |

糖果餅乾・食品

- | | |
|-----------------------------|-----------------------------------------|
| 17 Chocolate mon Loire | 49 Kelp(Kombu) おきな昆布 |
| 28 Kelp(Kombu) をくら屋 ● | 50 Side dish & box lunch cook deli 御膳 ▲ |
| 29 Healthy food 金沢治与門窯スッポン堂 | 51 Roll cake GOKOKU BAUM ▲ |
| 30 Sweets AUNT STELLA ▲ | 52 Japanese sweets 住吉だんご ▲ |
| 31 Japanese sweets 千鳥屋 | 53 Millet brittle あみだ池大黒 |
| 33 Sweets Morozoff ▲ | 54 Crepe Dipper Dan ▲ |
| 34 Castella 文明堂 | 65 Sweets まるしげ ▲ |
| 35 Japanese sweets 浪芳庵 | 66 Cream puff ピアード/イ/の作りたて工房 ▲ |

時尚品

女士時尚用品

- | |
|--------------------------------|
| 9 Kimono やまと |
| 12 Ladies' wear Honeys d.store |
| 27 Ladies' wear Lois CRAYON ● |

男士時尚用品

- | |
|----------------------------------|
| 11 Order suit GINZA global Style |
|----------------------------------|

服務・其他

- | | | |
|----------------------------|----------------------------|------------------------------------|
| 6 Relaxation Refresh Hands | 69 Flower Flower Shop花次郎 ▲ | 2 Cosmetics & medicine 阪神ドラッグストア ● |
| 37 Book BOOK 1st. | | |

雜貨

- | | | |
|-----------------------------|---------------------------------|-----------------------------------|
| 45 Ladies' shoes THE Maling | 48 Bag PEACH JAM | 25 Stationery Stationery Market ● |
| | | 46 General goods Cou Cou |
| | | 47 General goods Lady Girl |
| 10 General goods Honey Trap | 62 Jewelry & Wristwatch パンドラ宝石店 | 63 Socks SKIP-HOUSE |

時尚品

女士時尚用品

- | | | |
|---------------------------------------|-----------------------------------------|-------------------------------|
| 75 Wear WEGO ● | 122 Ladies' wear mew's ● | 142 Ladies' wear B.L.U.E. |
| 83 Ladies' wear lu:s | 123 Ladies' wear grove ● | 144 Ladies' wear MIX-O |
| 85 Ladies' wear ELLE ● | 124 Ladies' wear E hyphen world gallery | 145 Ladies' wear DoCLASSE |
| 87 Casual wear OZZ paradise | 127 Ladies' wear primaqua | 146 Ladies' wear form forma ● |
| 88 Casual wear UNIQLO | 128 Ladies' wear THE EMPORIUM ● | 149 Ladies' formal MAUA |
| 98 Ladies' wear Green Parks sara | 129 Stretch pants B-Three ● | 150 Wool & Knit マスザキヤ |
| 107 General goods/drug store's SHOP ● | 130 Ladies' wear セリザワ | 154 Ladies' wear aimable |
| 112 Ladies' wear OFUON ● | 131 Ladies' wear カロー ● | 157 Ladies' wear Dosch |
| 117 Kimono たんす屋 ● | | |

雜貨

鞋・包

- | | |
|------------------------------|-------------------------------|
| 79 Ladies' shoes clover leaf | 126 Ladies' shoes fitfit |
| 92 Ladies' shoes MORLACCHI | 137 Bag MON SAC ● |
| 97 Leather Bag HIRAMEKI | 151 Shoes & Bag REGAL SHOES ● |
| 99 Bag BAG HOUSE マサキ | 155 Ladies' shoes S・R・O |

珠寶・飾品

- | |
|--------------------------------|
| 116 Accessory フクヤ |
| 136 Jewelry JEWELRY TSUTSUMI ● |
| 156 Accessory claire's ● |

日常用品・其他雜貨

- | | | |
|--------------------------------------------------------|--------------------------------|-----------------------------------------|
| 74 General goods Lattice | 100 Glasses OWNDAYS ● | 109 Wig FONTAINE COUTURE |
| 76 General goods Bleu Bleu | 102 General goods WACHI FIELD | 111 Cosmetics & general goods shop in ● |
| 77 Leather goods & stationery BUSINESS LEATHER FACTORY | 103 General goods STONE MARKET | 132 Inner wear Chelsea ● |
| 89 General goods スエヒロ | 104 General goods LEUN | 135 Lingerie aimerfeel by belle mode |
| 90 Socks COMMON SENSE | 108 General goods MAMAUKUKO | |

美容沙龍・化粧品・藥品

- | | | |
|------------------------------|------------------------------|--------------------------------------------|
| 80 Cosmetics & medicine コクミン | 101 Oil blotting paper ひより ● | 91 Relaxation Raffine |
| 81 Cosmetics JINO | 148 Cosmetics スギムラ ● | 93 Reuse shop KOMEHYO ● |
| 82 Cosmetics POLA THE BEAUTY | | 106 Repairing of shoes & key Mr.Quickman ▲ |
| | | 110 Massager DOCTOR AIR ● |

服務・其他

- | |
|-------------------------------|
| 96 Donut misterDonut ▲ |
| 119 Japanese sweets 御菓子司 絹笠 |
| 139 Cheap sweets 夢ざらりい ハトキン ▲ |

餐飲・咖啡店

- | | | |
|----------------------------|----------------------------------------|-------------------------------|
| 95 Curry サンマルコ | 118 Cafe-Light meal Cafe And | 96 Donut misterDonut ▲ |
| 138 Ramen 古澤老麵 ▲ | 120 French toast, Bread ATELIER GUTE ▲ | 119 Japanese sweets 御菓子司 絹笠 |
| 140 Cafe-Restaurant 心斎橋ミツヤ | 121 Juice-Cake PAPAJI ▲ | 139 Cheap sweets 夢ざらりい ハトキン ▲ |
| | 141 Cafe CAFE BREAK ▲ | |
| | 153 Cafe CAFE英國屋 ▲ | |

糖果餅乾・食品

- | |
|-------------------------------|
| 96 Donut misterDonut ▲ |
| 119 Japanese sweets 御菓子司 絹笠 |
| 139 Cheap sweets 夢ざらりい ハトキン ▲ |

餐飲・咖啡店

餐

- | | | |
|------------------------------|--------------------------|------------------------------|
| 173 Kushikatsu 串かつ料理 活 | 202 Meat&Wine bar ローマ軒 ▲ | 218 Udon 四國 ▲ |
| 179 Tuna restaurant 築地又こい家 ▲ | 213 Okonomiyaki 勝家 ▲ | 220 Pork outlets 花柳 ▲ |
| 194 Grilled meat 食道園 | 214 Soba 富士屋 ▲ | 221 Curry 上等カレー ▲ |
| 196 Chinese restaurant 睡眠 ▲ | 215 Ramen 古澤 ▲ | 222 Japanese food 膳や ▲ |
| 197 Chanpon 中央軒 ▲ | 216 Sukiyaki 善 | 235 Sushi-go-around 大起水産回転寿司 |
| 201 Grilled chicken 正起屋 | 217 Pork steak 大阪トンテキ ▲ | |

居酒屋

- | | | |
|----------------------|--------------------|----------------------|
| 178 Izakaya 酒房 七津屋 ▲ | 237 Izakaya 赤垣屋 ▲ | 239 Izakaya 赤のれん ▲ |
| 195 Izakaya おか長 ▲ | 238 Izakaya 祇園囃子 ▲ | 244 Izakaya 初かすみ酒房 ▲ |

咖啡・面包店

- | | | |
|---------------------------|-------------------------------|------------------------------|
| 160 Cafe STARBUCKS COFFEE | 212 Cafe-Light meal 喫茶館 英國屋 ▲ | 241 Bakery cafe COOK house ▲ |
| 177 Cafe BONNARD ▲ | 226 Bakery cafe サンマルクカフェ ▲ | 243 Cafe KIEFEL COFFEE ▲ |
| 181 Cafe 甘党 まえだ ▲ | | |

糖果餅乾・食品

- | | | |
|-------------------|------------------------------|-----------------------------|
| 174 Sweets まるしげ ▲ | 193 Healthy food 金沢治与門窯スッポン堂 | 225 Total beauty salon Dear |
|-------------------|------------------------------|-----------------------------|

美容沙龍・化粧品・藥品

時尚品

女士時尚用品

- | | |
|---------------------------|------------------------------------------|
| 169 Ladies' wear SU*DU*FE | 209 Ladies' wear おしゃれ館 Ann |
| 188 Ladies' wear SATCHAN | 210 Ladies' wear SPECCHIO ● |
| 190 Ladies' wear Honeys | 231 Ladies' wear mirché & elvence-deux ● |

男士時尚用品

- | |
|-----------------------------|
| 170 Men's wear TAKA-Q ● |
| 185 Men's wear marusho ● |
| 192 Men's wear SINACOVA |
| 227 Shirt BRICK HOUSE シャツ工房 |

雜貨

- | | | |
|--------------------------------------------------|------------------------------------|----------------------------------|
| 208 Men's shoes Shoe Gallery | 211 Shoes asics WALKING ● | |
| 162 Contact lens Vision Style | 205 Sporting good MIZUNO ● | 229-2 Contact lens コンタクトのeyecity |
| 168 Wig 桂や | 206 General goods CARNIVAL | 230 General goods どんぐり共和国 |
| 187 Smart phone Accessory smart phone case store | 207 Stationery Stationery Market ● | 232 Inner wear AMO'S STYLE |
| 204 Socks COPO ● | 228 General goods Mother garden | |

服務・其他

- | | | |
|----------------------------------------|-------------------------------------|---------------------------------------------|
| 172 Book LIBRO | 186 Fortune-telling 古いのフォレストランプ ▲ | 233 Reuse shop Aria ● |
| 182 Stretch super B stretch | 191 Relaxation Refresh Hands | 236 Wristwatch repairing Total Watch Repair |
| 183 Barber 理容清水 ▲ | 200 Bonesetter's あい整骨院 ▲ | 240 Convenience store サンクス |
| 184 Clothes & bag repairing ママのリフォーム ▲ | 223 Relaxation Refresh Atelier OZ ▲ | |

▲無 ▲標記の商店、可使用各類信用卡及銀聯卡。

●能對應的免稅店

●旅客折扣店

▼可以使用下列的信用卡



Attention 注意

Read the instructions properly!! 使用優卷前請先閱讀注意事項!



- 此捲在難波地下街均可使用 (有一部分的店舖無法試用)
- 此卷無法兌換現金
- 此卷無法找零
- 根據店舖業務時間有異動
- 不可以使用過期的兌換卷
- 一店家一人最多僅限使用十張